

Launch of FISE; a research perspective

Gert-jan Nabuurs
Professor European Forests

Congratulations on launch of FISE

But...

- Urgent need for much improved FISE
- Up to date, timely, responsive, early detection of risks
- As a support to Green deal: be able to follow carbon stock changes with high certainty; climate smart forestry
- Member States spend 50M€/y on national forest inventories. The material is hardly used.
- Satellites fly over every day; also hardly used

Example of limited use of data

- Forest Europe indicator 3.1: increment 1990,2000,2005,2010.

One number per country; many missing values or strangely fluctuating

- Public expenditure.

10 out of 27 EU

countries do not report.

We spend 7.5 billionEuro/y

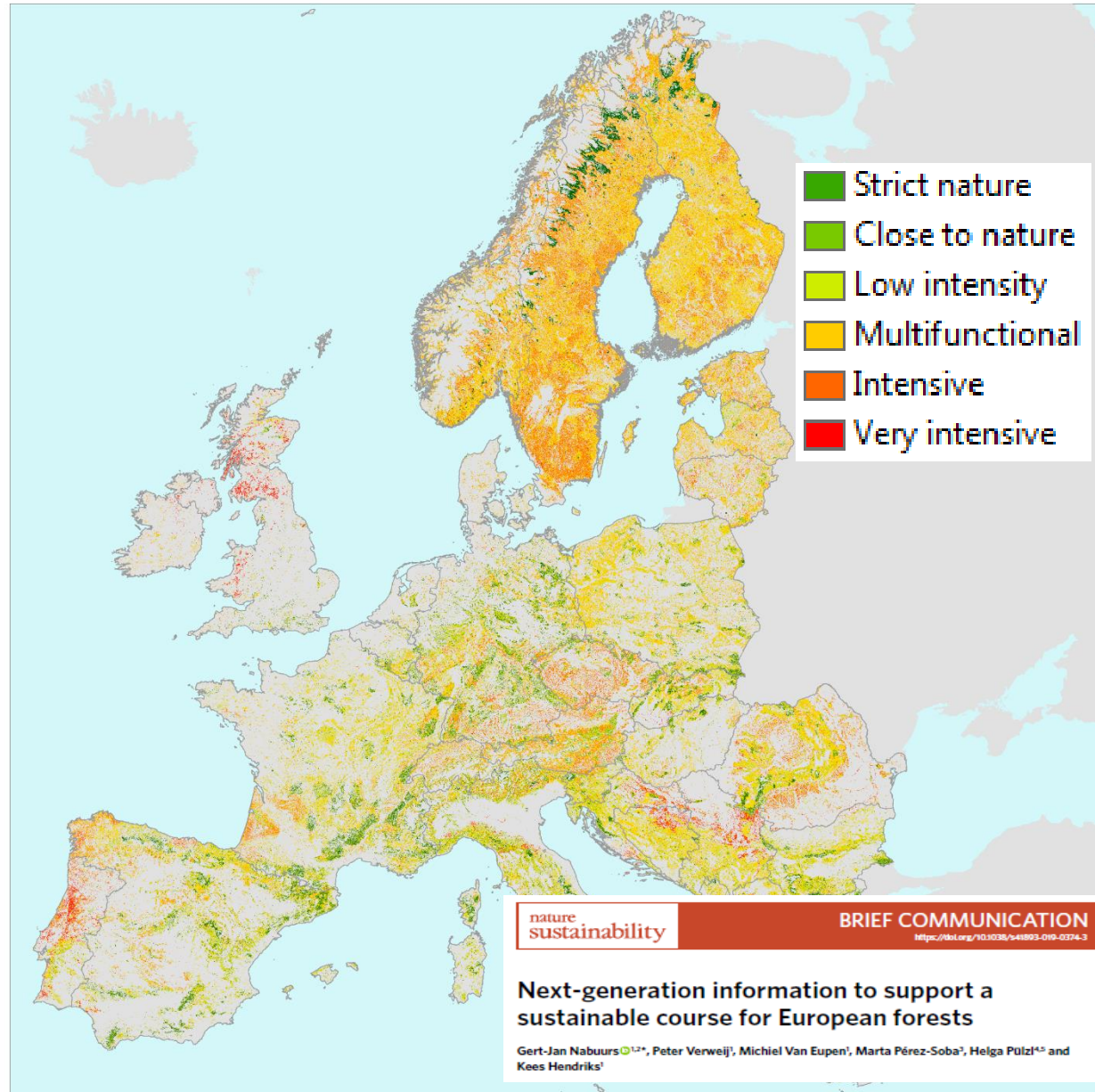
How effective?

Country	Forest (1,000 ha)	Net annual increment (1,000 m ³)			
		1990	2000	2005	2010
Ireland	725.6	-	-	-	6,677.6
Italy	9,028	27,779	30,162	31,352	32,543
Latvia	3,354	16,500	16,500	-	19,680
Liechtenstein	6.2	25	25	25	25
Lithuania	2,170	-	-	11,460	11,030
Luxembourg	86.8	650	650	650	650
Malta	0.3	-	-	-	-
Moldova	386	1,129.9	1,327.2	1,397.6	1,462.3
Monaco	0	-	-	-	-
Montenegro	826.8	-	1,115.2	1,115.2	2,020.2
Netherlands	373.5	2,204	2,226.9	2,737.5	2,738
Norway	12,102	23,172	26,159	27,395	25,750
Poland	9,329	-	-	-	62,300
Portugal	3,239.1	18,564	19,054	18,870	-
Romania	6,515	31,874.3	28,591.1	28,703.6	29,260

We can make much better use of information : 1x1 km forest management strategies

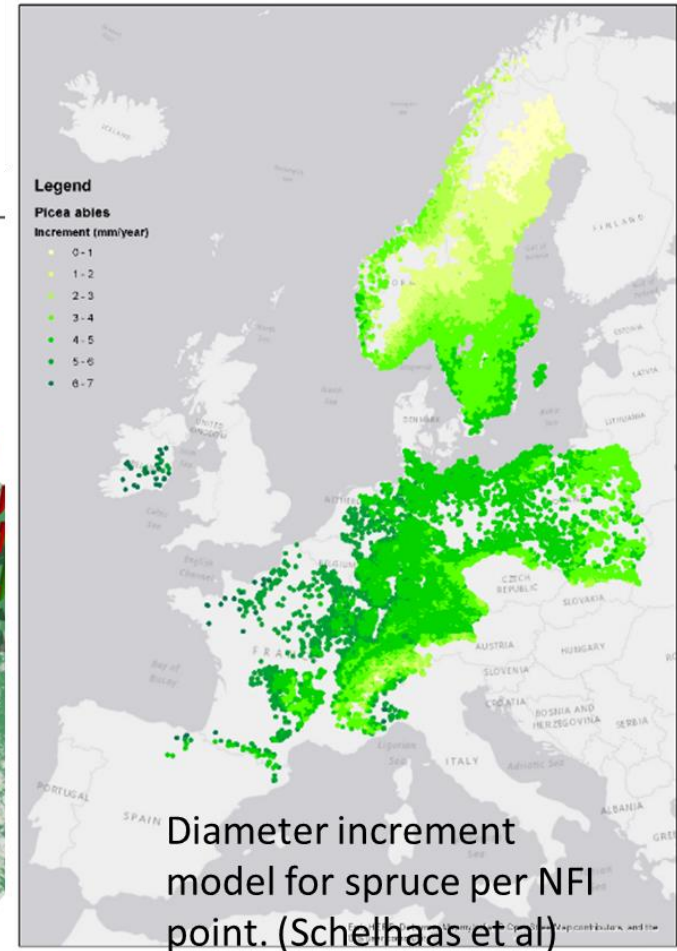
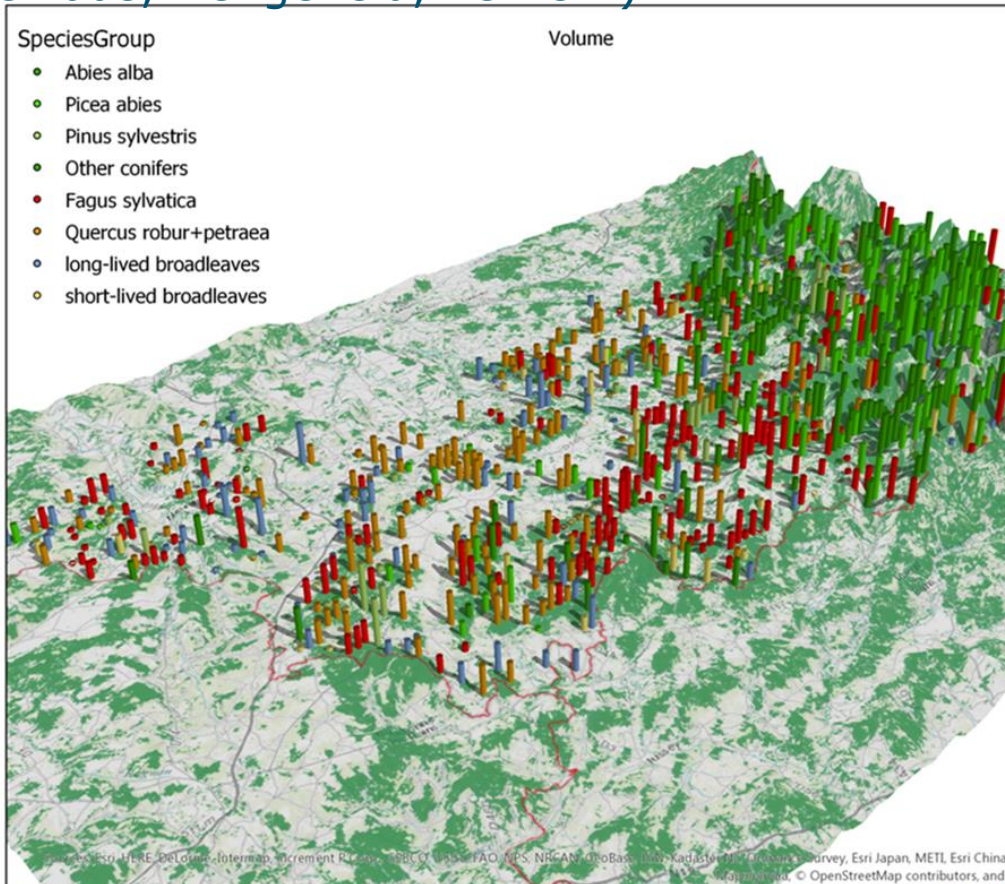
Map shows it is possible to strategize the management by combining high resolution data & info.

Tools can help to fulfil all functions of forests...and get us out of our trenches



It is possible to use the data much better

3D view on Vosges: Growing stock at every NFI plot (EFISCEN-space; Nabuurs, Schelhaas, Hengeveld, Verkerk)



Example of ongoing change: Climate Smart Forestry: Dutch Climate Accord

- 2 M€/y is allocated to forestry pilots in climate smart forestry
- A wide variety of measures is being implemented now. Climate measures toolbox.
- This will need good monitoring and dbs to assess the carbon effect!

<https://www.vbne.nl/thema/klimaataakkoord>

Yesterday our Minister launched the Forest strategy for Netherlands



Revitalising forests: improve the soil and the biodiversity



Walnut hybrid plantation

One of the pilots under Climate accord.

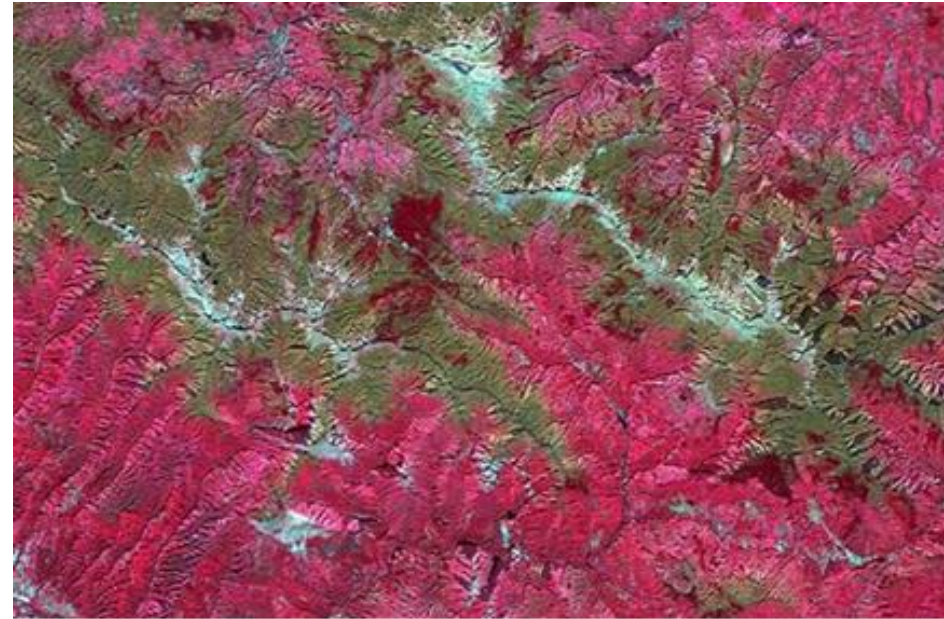
This will also need access to decades of tree breeding data

Dutch Ministry of Agriculture, Nature Management and Fisheries has agreed to start up European network of CSF.

i.e. cooperation and bringing data together

Concluding: the needs

- FISE; good start: needs to proceed.
- Much more up to date
- Covering resources; carbon, biodiversity, disturbances, soc-econ, industry, etc
- We have to move towards novel ways of dealing with info



Tree spp identification (Chirici et al)

Thank you

Gert-jan.nabuurs@wur.nl